



Project by



**Corporate Office:** 1305, 13th Floor, Dev Corpora, Cadbury Junction, Eastern Express Highway, Opp. Korum Mall, Thane-West. | T: +91-22-5338333 | 2333833  
E: info@jvmspaces.com | W: www.jvmspaces.com

**Site Address:** JVM'S Aroma | Plto No.: S No. 4, Hissa No. 3, Thane-400 615.

Architects: **M/S . Ashnit Consultants**  
RCC Consultant: **Mr. Vikash Gokhle**

**Booking Contact : 81082 12239 | 91520 12220**



**RERA NO.: P51700028361**  
Available at website: <http://maharera.mahaonline.gov.in>

Note: all plans, drawings, facilities etc are subject to the approval of respective authorities and would be changed if necessary. The discretion remains with the developer, all rendering, floor plans, pictures, maps are the artist's conception and not actual depictions of building, its wall, roadways or landscaping. The developer does not warrant or any legal liability or responsibility for the accuracy, completeness, or usefulness of any information disclosed.



JVM'S  
**AROMA**  
LUXURY BEYOND EXPECTATION

# JVM'S AROMA

LUXURY BEYOND EXPECTATION

**23 Stores Tower High-Rise**  
**Residential cum Commercial Tower**  
**Shop on Ground Floor**  
**1 BHK Apartments**  
**Designer entrance lobby**

### Internal Amenities

- Main Door - 45 mm thick fire resistant flush door, Both side laminated.
- Aluminum anodizing sliding window
- Gypsum finished wall
- Concealed branded electrical copper wiring.

### Bedroom

- Bedroom 35mm thick laminate door.
- Vitrified tiles flooring.
- Concealed branded electrical copper wiring.
- Branded switches and MCB.
- Aluminum anodizing sliding window.

### Kitchen

- Granite kitchen platform with stainless steel sink.
- Vitrified tiles flooring.
- Aluminum anodizing sliding window.
- Concealed branded electrical copper wiring.
- Branded switches and MCB.
- Walls tiles dodo kitchen.

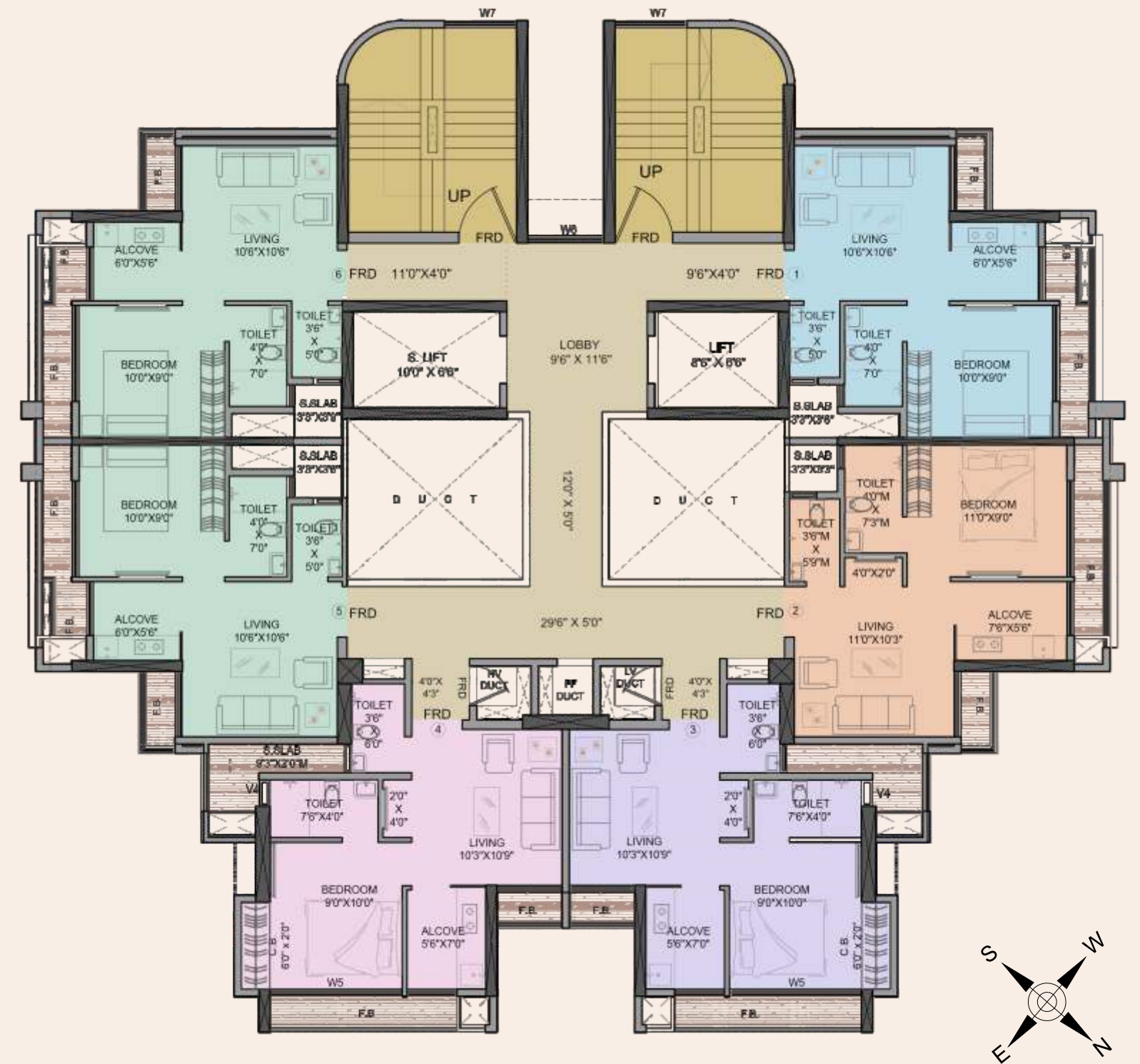
### Bathroom

- 30mm thick doors.
- Premium quality plumbing fittings and sanitary ware.
- Concealed branded electrical copper wiring.
- Anti skid flooring tiles.
- Branded switches and MCB

### Common areas, amenities and facilities

- Designer Entrance Lobby
- Gymnasium
- High Speed Elevators
- DG Backup For Common Areas And Elevators
- Smart Security With CCTV & Intercom
- Water Proof and Weather Proof Texture Paint on External Walls
- Fire Resistant Door For Staircases.
- LED Lights In Common Areas
- Earthquake Resistance Structure

## LUXURIOUS LIFESTYLE COMFORTABLE LIVING



**TYPICAL FLOOR PLAN**

### RERA CARPET AREA

APARTMENT NO.	RERA CARPET AREA(A)	ENCLOSED BALCONY(B)	F.B. (C)	SERVICE DUCT(D)	TOTAL (A+B+C+D) SQ.MT.	TOTAL (A+B+C+D) SQ.FT.
1	26.93 SQ.M.	0	4.92 SQ.M.	1.11 SQ.M.	32.96 SQ.M.	354.78 SQ.FT.
2	29.91 SQ.M.	0	4.92 SQ.M.	0.96 SQ.M.	35.79 SQ.M.	385.24 SQ.FT.
3	25.90 SQ.M.	3.94 SQ.M.	4.70 SQ.M.	2.53 SQ.M.	37.07 SQ.M.	399.02 SQ.FT.
4	25.90 SQ.M.	3.94 SQ.M.	4.70 SQ.M.	2.53 SQ.M.	37.07 SQ.M.	399.02 SQ.FT.
5	26.93 SQ.M.	0	4.92 SQ.M.	1.09 SQ.M.	32.94 SQ.M.	354.56 SQ.FT.
6	26.92 SQ.M.	0	4.92 SQ.M.	1.10 SQ.M.	32.94 SQ.M.	354.56 SQ.FT.